



# basic education

Department:  
Basic Education  
**REPUBLIC OF SOUTH AFRICA**

## **NATIONAL SENIOR CERTIFICATE**

**GRADE 12**

**ENGINEERING GRAPHICS AND DESIGN P1**

**FEBRUARY/MARCH 2014**

**MEMORANDUM**

**MARKS: 100**

**This memorandum consists of 7 pages.**

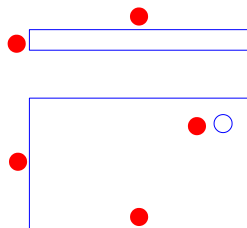
# ANSWERS

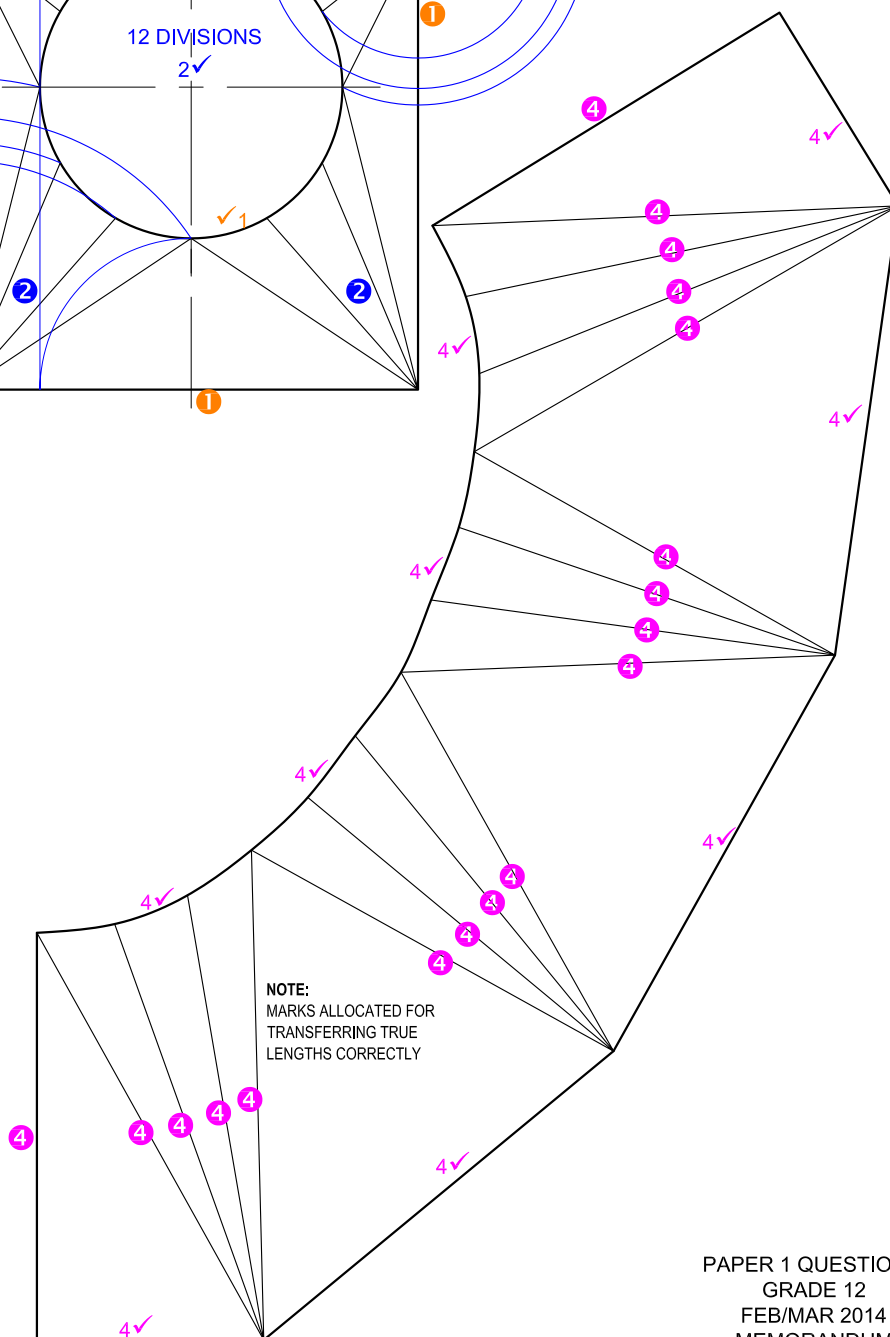
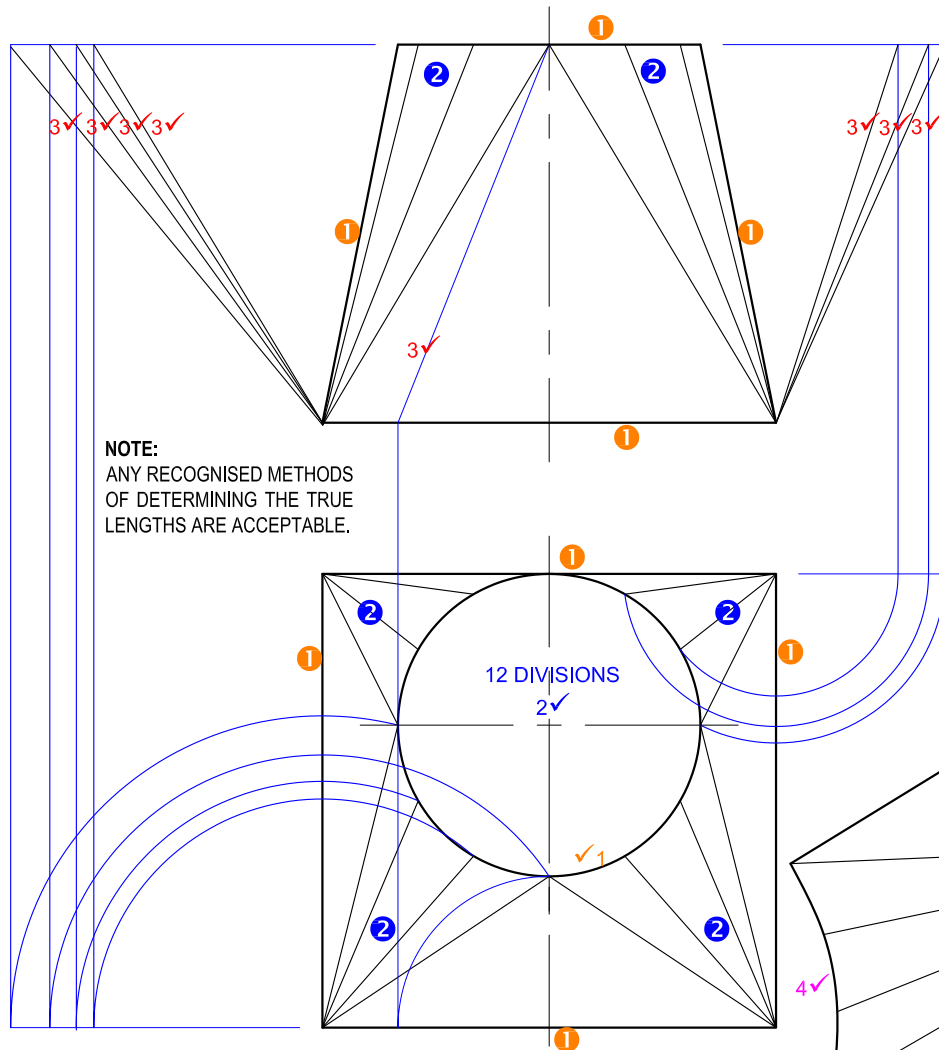
1	14-02-2014	1
2	P XABA	1
3	1 : 200	1
4	2014-001	1
5	BUDGET DRAUGHTING	1
6	4	1
7	1 : 30	1
8	2,25 m	1
9	GATE	1
10	GULLEY	1
11	UP	1
12	RETAINING WALL	1
13	TREE	1
14	SOUTH WESTERN	1
15	47,5 m	2
16	5 m x 12,5 m	2
17	156 m <sup>2</sup> [calculation 1, answer 1, metre <sup>2</sup> 1]	3
18	245 m [calculation 1, answer 1, metre 1]	3
19	12,4 m [calculation 1, answer 1, metre 1]	3
20	(See below.)	3

**TOTAL: 30**

20

FREEHAND ●



**ASSESSMENT CRITERIA**

1	GIVEN	5
2	CONSTRUCTION	4
3	TRUE LENGTHS	8
4	DEVELOPMENT	18
<b>TOTAL</b>		<b>35</b>

PAPER 1 QUESTION 2  
GRADE 12  
FEB/MAR 2014  
MEMORANDUM

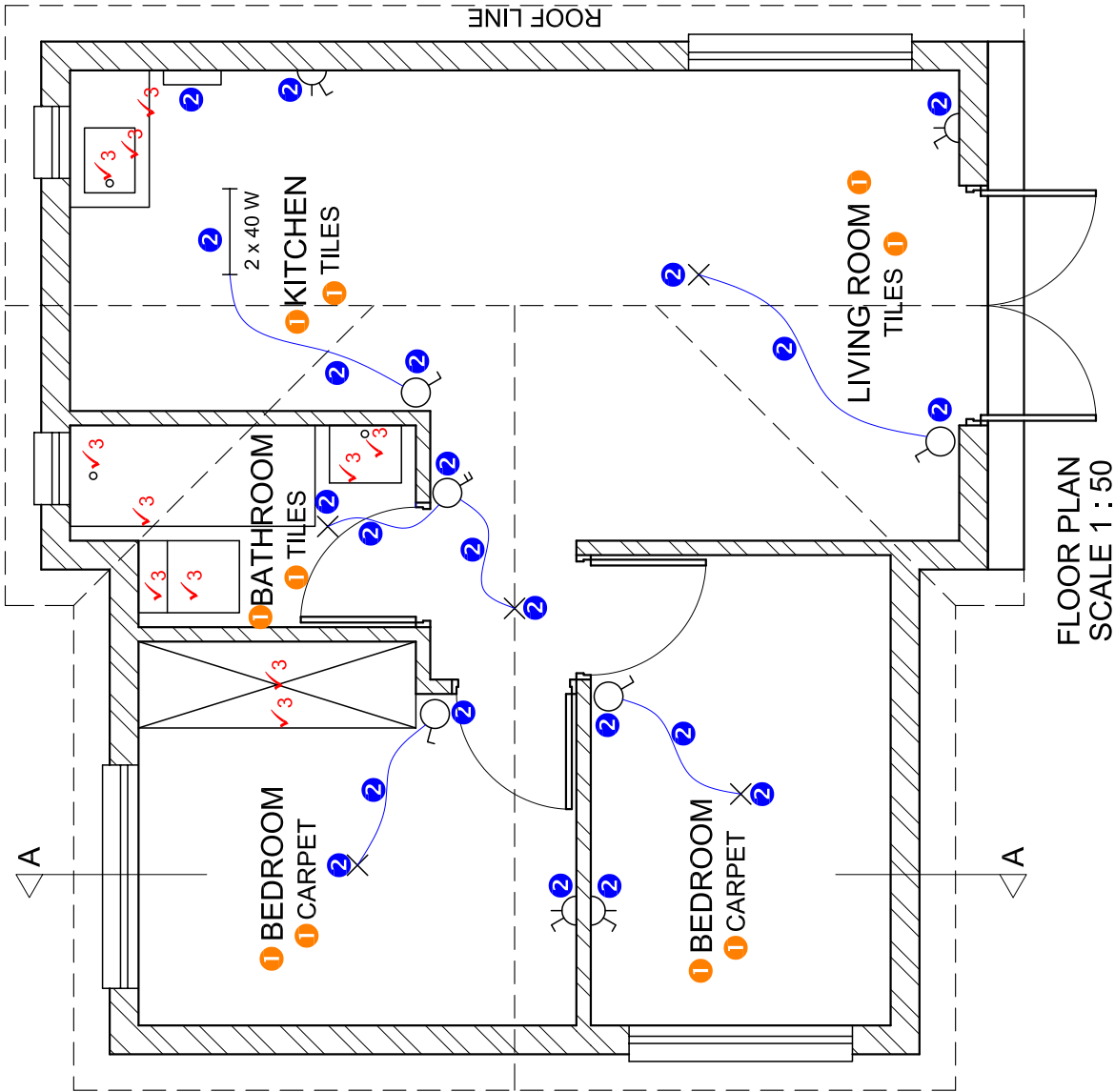
Orthographic projection of a kitchen scene. The top view shows a window, a washing machine, and a sink. The front view shows a wall with a window, a range hood, and a washing machine. The side view shows a wall with a window and a range hood. Construction lines and vanishing points (PP, LVP, RVP) are shown. Markings include '1' for construction, '2' for walls, and '3' for circles. Checkmarks are present for some elements.

Isometric drawing of the kitchen scene. The walls are marked with '2' and the circles with '3'. A stationing point (SP) is indicated. Checkmarks are present for some elements.

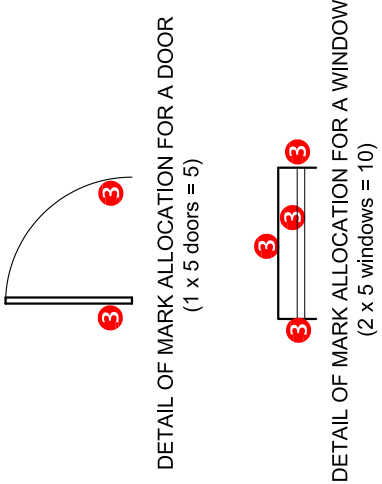
Perspective drawing of the kitchen scene. The walls are marked with '2' and the circles with '3'. A stationing point (SP) is indicated. Checkmarks are present for some elements.

ASSESSMENT CRITERIA		
1	CONSTRUCTION + VPs	6
2	WALLS + CUPBOARDS	17½
3	EXTRACTOR + CIRCLES	15½
TOTAL		39

PAPER 1 QUESTION 3  
GRADE 12  
FEB. - MAR. 2014  
MEMORANDUM



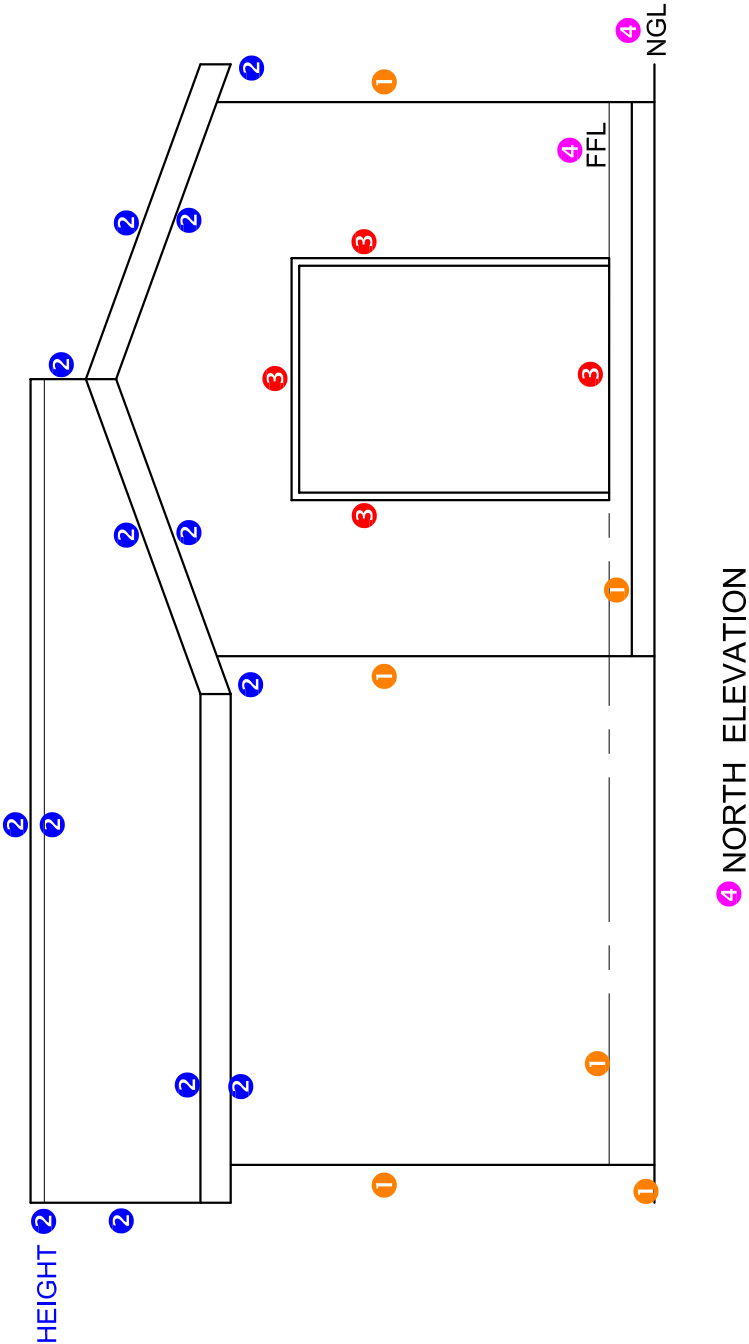
FLOOR PLAN  
SCALE 1 : 50



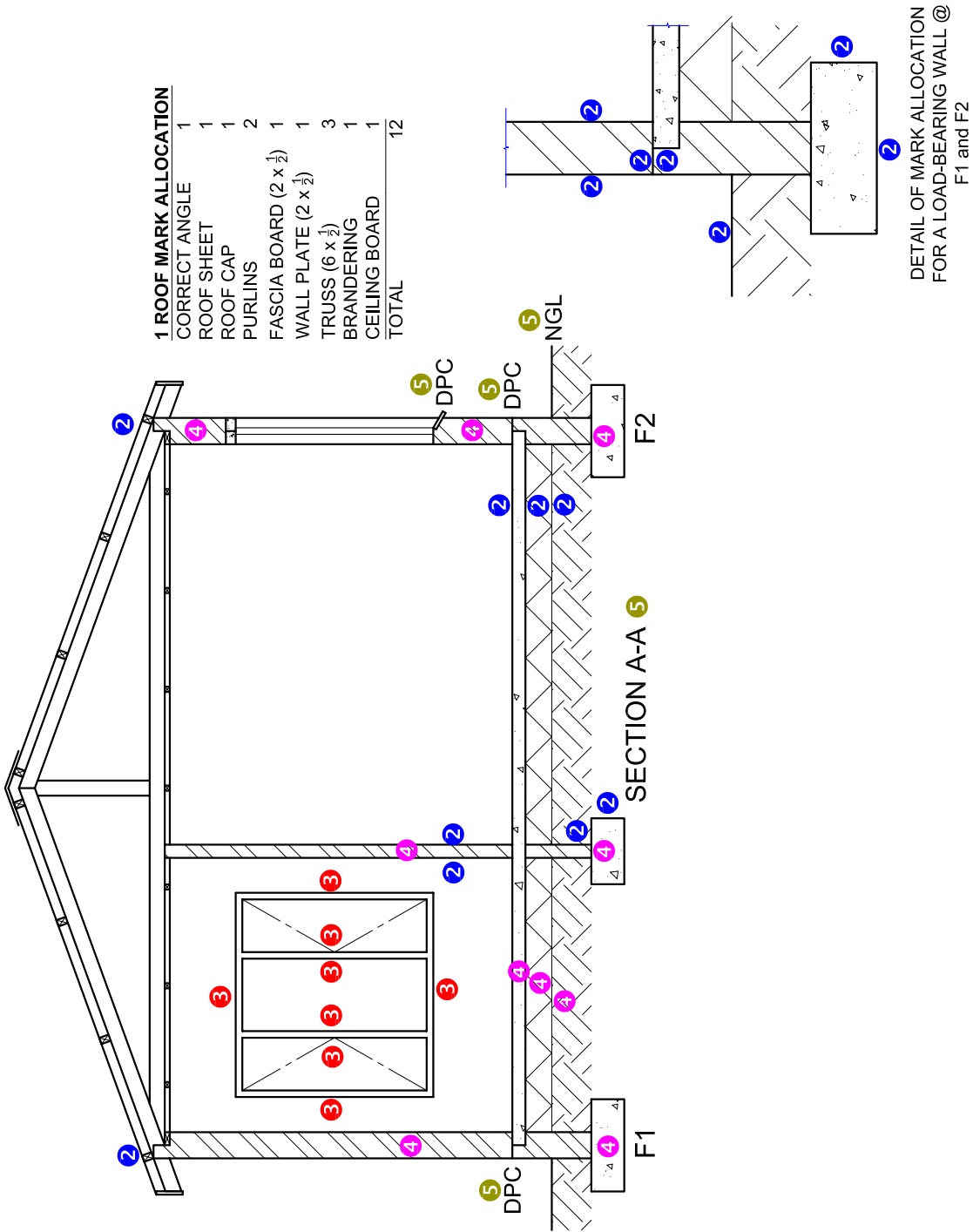
**5 HATCHING MARK ALLOCATION**

SANS COMPLIANT (TYPE)	1
HATCHING CORRECTLY APPLIED	2
TOTAL	3

FLOOR PLAN	
1	LABELS
2	ELECTRICAL
3	FIXTURES
4	DOORS + WINDOWS
5	HATCHING
SUBTOTAL	
5	11
11	11
15	
3	
45	



NORTH ELEVATION		
1	WALLS + FFL + STEP	3
2	ROOF + FASCIA + GUTTER + RWDP	6½
	DOOR	2
3	LABELS	1½
SUBTOTAL		13



SECTIONAL ELEVATION	
1	ROOF
2	WALLS + FLOOR + FOUNDATION
3	WINDOWS
4	HATCHING
5	LABELS
SUBTOTAL	
12	11 1/2
7	5
2 1/2	38